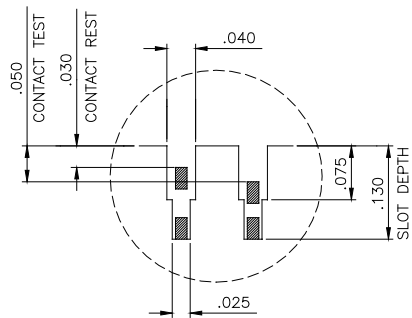
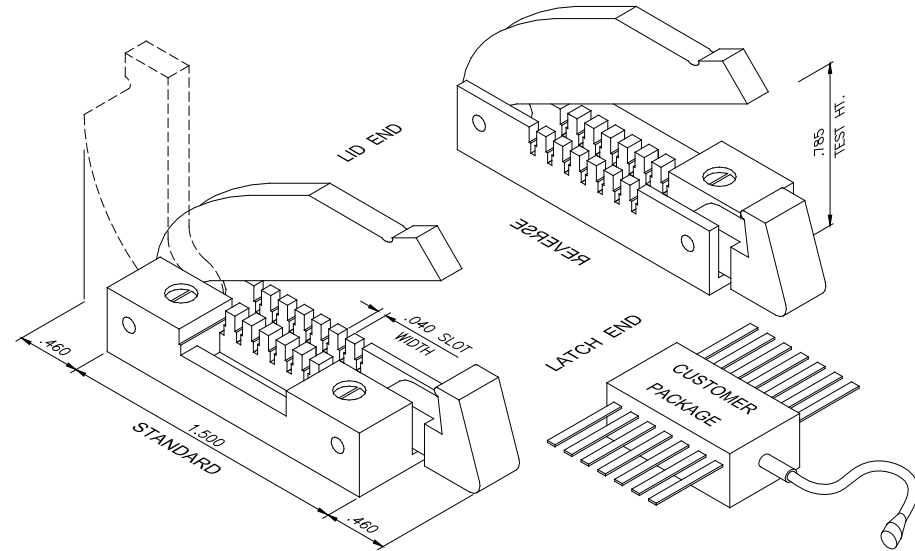
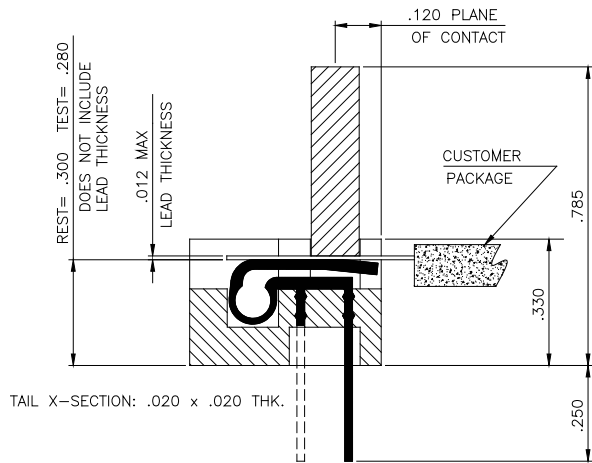
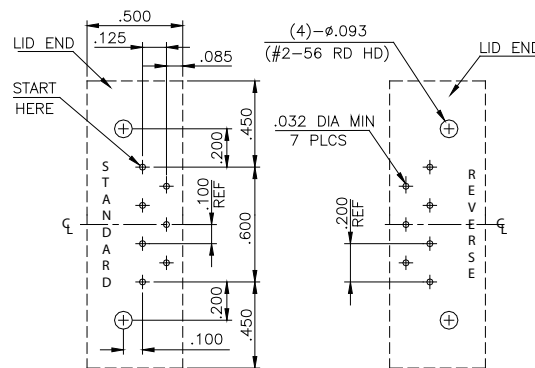


REV	ECO	DESCRIPTION	DATE	APPR
A		Initial release	1/1/2011	PWC



TYP SLOT CONFIGURATION  
 (DOES NOT INCLUDE LEAD THICKNESS)

**FOOTPRINT**  
 (SOCKET SIDE OF BOARD)



**SPECIFICATIONS:**

INSULATOR: PPS (POLYPHENYLENE SULFIDE).  
 CONTACT: BeCu., SPRING TEMPERED 30u GOLD OVER 30u NICKEL.  
 THERMAL RANGE: -55°C/+155°C.  
 5 AMPS CURRENT CARRYING CAPACITY



**1900 Butterfly Connector Set**

SIZE <b>A</b>	DWG NO. <b>1</b>	PART NO. <b>1900</b>	REV <b>A</b>
SCALE:	REFERENCE FILENAME <b>1900</b>	SHEET: <b>1 OF 1</b>	